



**Customer:** John's CBD  
**Customer Sample ID:** Delta 8 3000 mg  
**Laboratory Number:** 20L0385-01  
  
**Density:** 0.9582



## Cannabinoid Profile

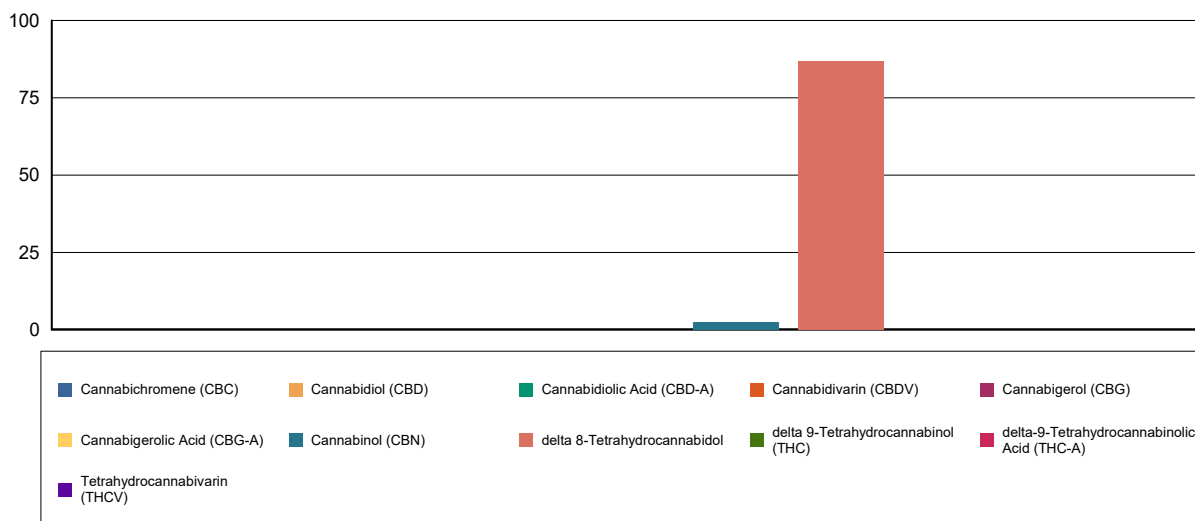
**Extraction Technician:** SH  
**Analytical Chemist:** CB

Extraction Date(s)	Analysis Date(s)
12/21/2020	12/21/2020

Cannabinoids (HPLC)		Results	
	LOD (mg/mL)	%	mg/mL
Cannabidiarin (CBDV)	<0.20		
Cannabidiolic Acid (CBD-A)	<0.20		
Cannabigerolic Acid (CBG-A)	<0.20		
Cannabigerol (CBG)	<0.20		
Cannabidiol (CBD)	<0.20		
Tetrahydrocannabivarin (THCV)	<0.20		
Cannabinol (CBN)		0.23	2.34
delta 9-Tetrahydrocannabinol (THC)	<0.20		
delta 8-Tetrahydrocannabidol		8.68	86.8
Cannabichromene (CBC)	<0.20		
delta-9-Tetrahydrocannabinolic Acid (THC-A)	<0.20		
<b>Cannabinoids Total</b>		<b>%</b>	<b>mg/mL</b>
Max Active THC		0.00	0.00
Max Active CBD		0.00	0.00
T.Active Cannabinoids		0.23	2.34
Total Cannabinoids		8.91	89.10

Following USDA guidelines on uncertainty, Altitude Consulting's uncertainty are calculated for CBDa and CBD at +/- 4%. The uncertainty for THCa and THC are +/- 5%. This implies the range for a 10% value of CBD to be 9.6-10.4%. The uncertainty range for a 0.30% value of THC would be 0.28-0.32%. The measurement uncertainty is calculated using a coverage factor of 2.

### Cannabinoid (mg/mL)



Reporting Limits will vary based on sample extraction weight used for the analysis.

Altitude Consulting, LLC utilizes NIST traceable Reference Standards and Certified Reference Material to calibrate analytical instruments along with proven analytical methods. The methods are applied in the most ethical manner following good laboratory practice guidelines. The results of this report are based solely on the sample submitted and cannot be reproduced.